

**LOOTAH & SJ**  
TOWER

LootahProperties.pk

*Redefining Karachi`s Lifestyle & Architecture*

# A landmark where global excellence meets Karachi's evolving skyline

A new benchmark rises bringing international standards, refined living, and architectural excellence to the heart of Karachi.



Lootah & SJ Tower introduces a standard inspired by the world's most refined cities bringing a new rhythm of living to Karachi.

**DISCLAIMER:** All visuals in the brochure are for illustrative purposes only. The final delivered project may differ in design, specifications, and finishes.





## Chairman's Message

# Building Legacies, Creating Future

Over the decades, we have evolved from humble beginnings into a name synonymous with excellence in real estate and beyond. Every step of our journey has been guided by a deep commitment to progress, quality, and the pursuit of opportunities that shape the future.

Today, we take immense pride in the communities we create and the value we bring to people's lives. Our vision extends beyond constructing buildings; we aim to develop spaces that inspire, connect, and redefine modern living. With every project, we uphold the highest standards of craftsmanship,

sustainability, and innovation—ensuring that our legacy continues to grow stronger with each passing generation.

As we look ahead, our journey remains fueled by the same pioneering spirit that has defined us for centuries. We will continue to embrace new challenges, explore new horizons, and set benchmarks in the real estate industry. With a firm foundation of trust and excellence, Lootah Properties is committed to shaping the future while staying true to the values that have guided us for generations.

Sultan Ali Rashed Lootah

LOOTAH

# Two Nations. One Vision.

A powerful collaboration between the UAE and Pakistan  
where visionary thinking meets local expertise.  
Together, Lootah & SJ create a leafy that goes a long way.



*Exterior*


*Modern Architecture. Timeless Presence.*



# Every Element, Thoughtfully Considered

17  
Floors of Architectural  
Excellence

78  
Residences designed  
for modern living

  
4 & 5 Rooms  
Apartments

  
Dedicated Parking  
Facilities

  
Fully Equipped  
Fitness Centre

  
Rooftop  
Amenities



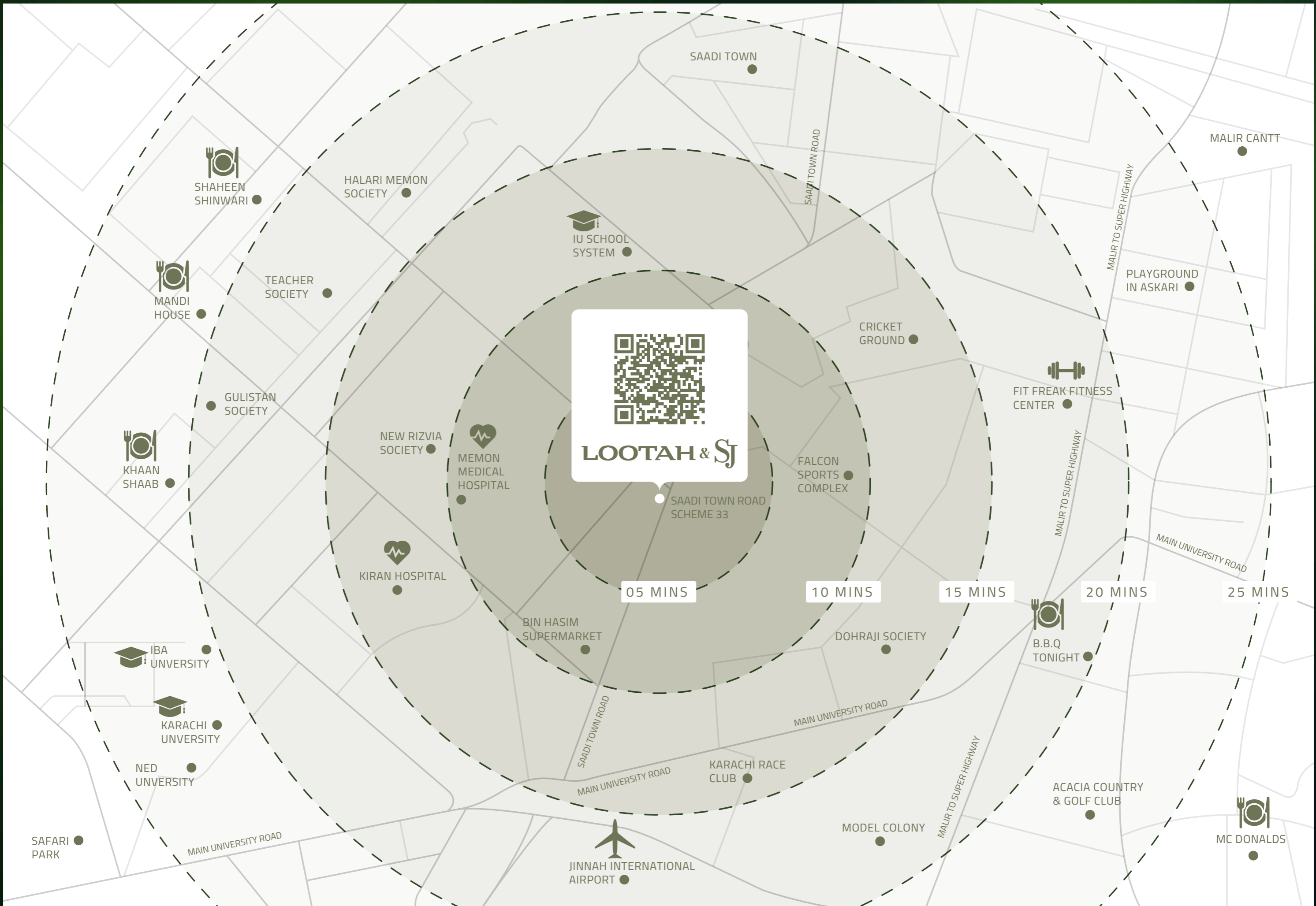
# A Philosophy of Design and Experience

A seamless integration of aesthetics and functionality, designed to enhance the way you live. It is a structure designed not just to be seen but to be experienced.

LOOTAH & SJ

*Location*

*Connected to Everything That Matters*





LOOTAH

# Connected to the Best



HOSPITAL & CLINICS



MALLS & LIFESTYLE



INTERNATIONAL AIRPORT



PARKS & GYMS



SCHOOLS & UNIVERSITIES



RETAIL & DINE IN

*Majestic Interiors*  
*A Place To Pause, Breathe, and Grow*

# Designed to Feel. Built to Last.

Spaces that embrace light, proportion, and comfort—crafted to create an environment that feels both refined and personal.



LOOTAH

LOOTAH



# Grand Lobby

Where First Impressions Become Lasting Experiences



# Corridors

Spaces That Carry Elegance  
Through Every Step

LOOTAH

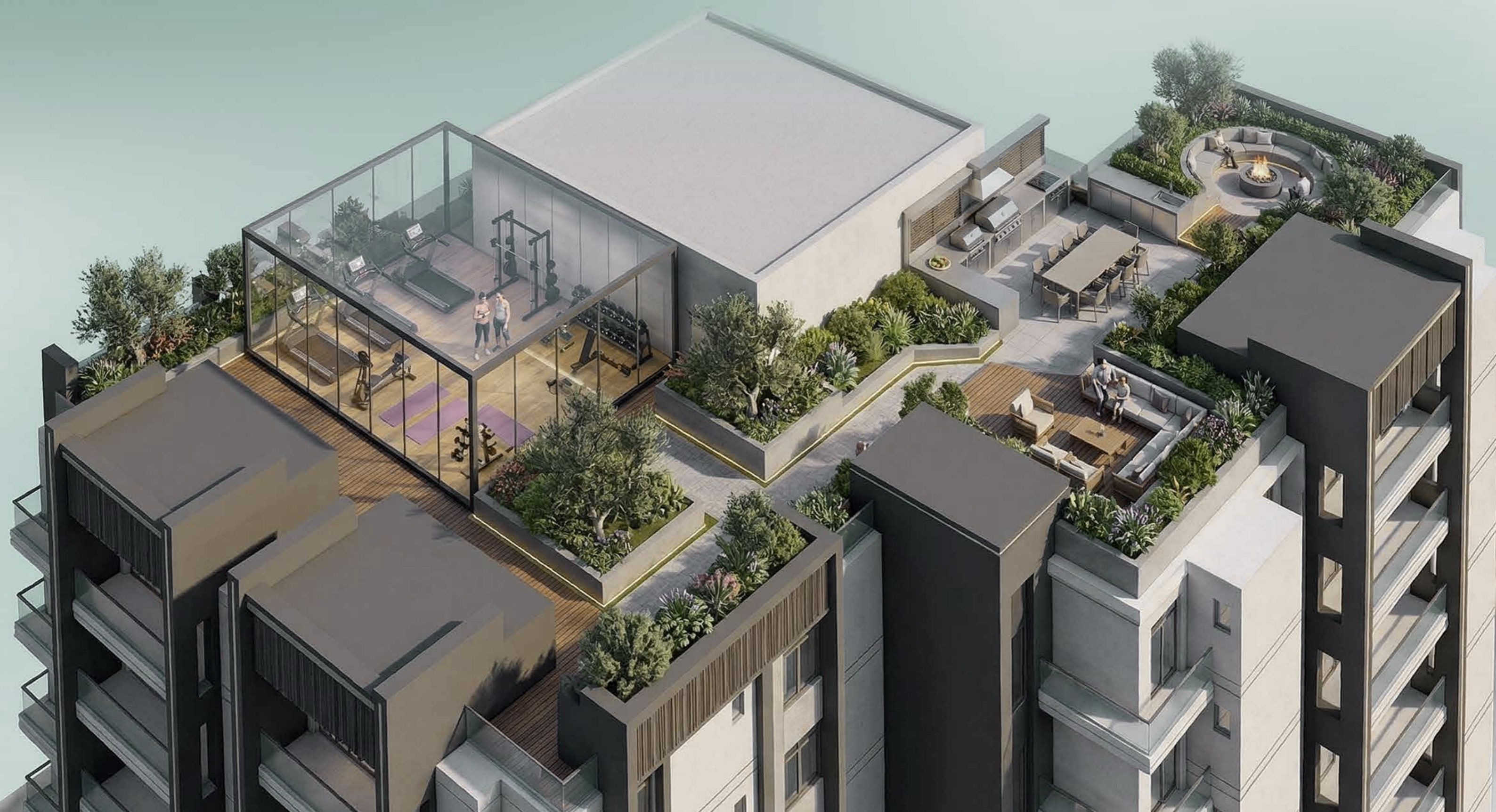




# *Amenities*

*A Lifestyle Designed Beyond Expectations*

# Roof Top Amenities



LOOTAH



## Kids Play Area

A joyful space where little moments grow into lasting memories.



## BBQ

Crafted for gatherings that turn everyday moments into something special.

LOOTAH



Gym

Elevating everyday fitness into a refined experience.



## Security

24/7 security with dedicated personnel and advanced CCTV surveillance, ensuring your safety at all times.



## Parking

4 levels of dedicated parking, ensuring every resident parks with ease and complete peace of mind.

# Parking Plan



# *Floor Plans*

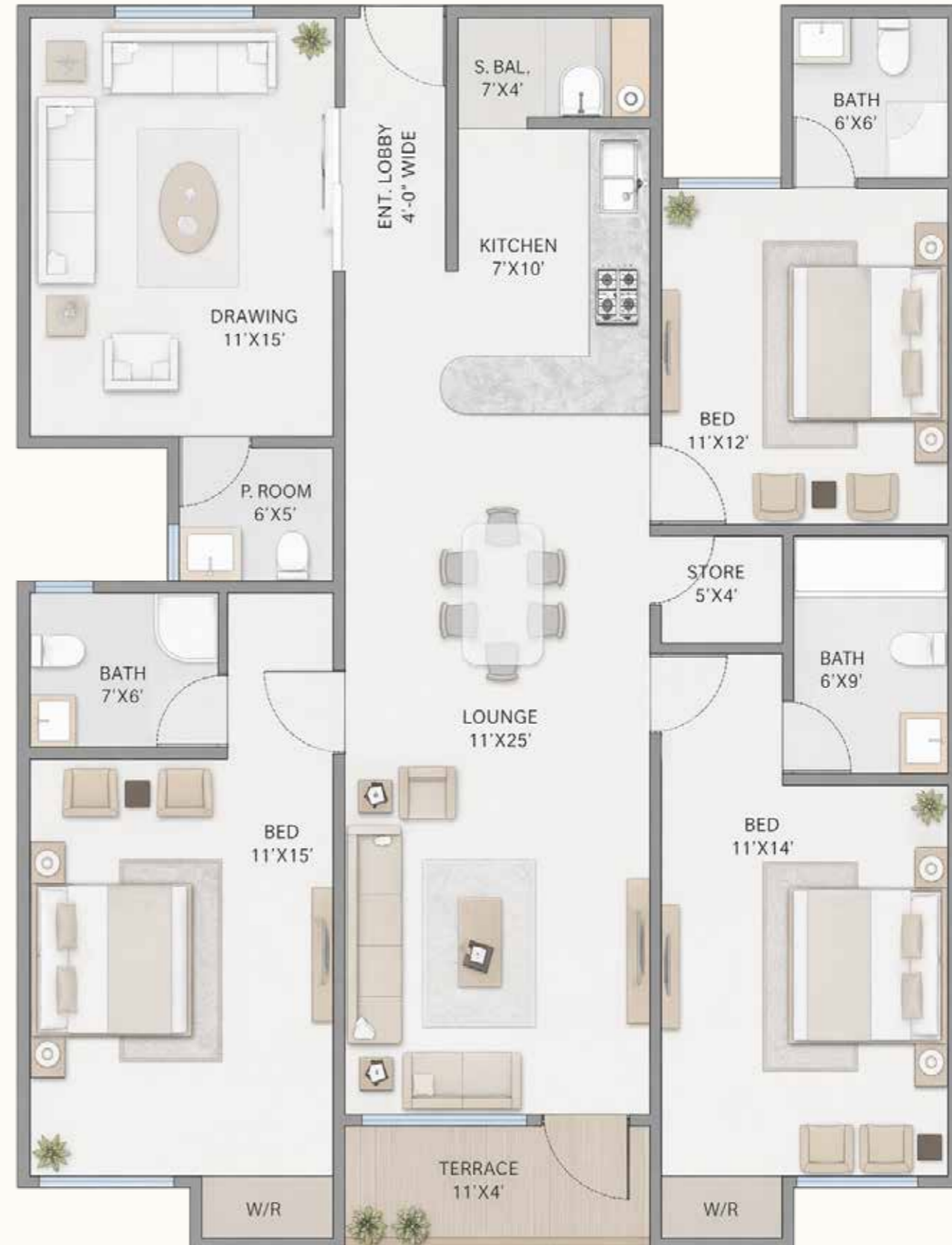
*A Place That Feels Like It Was Always Yours*

Type A

# 5 - Rooms

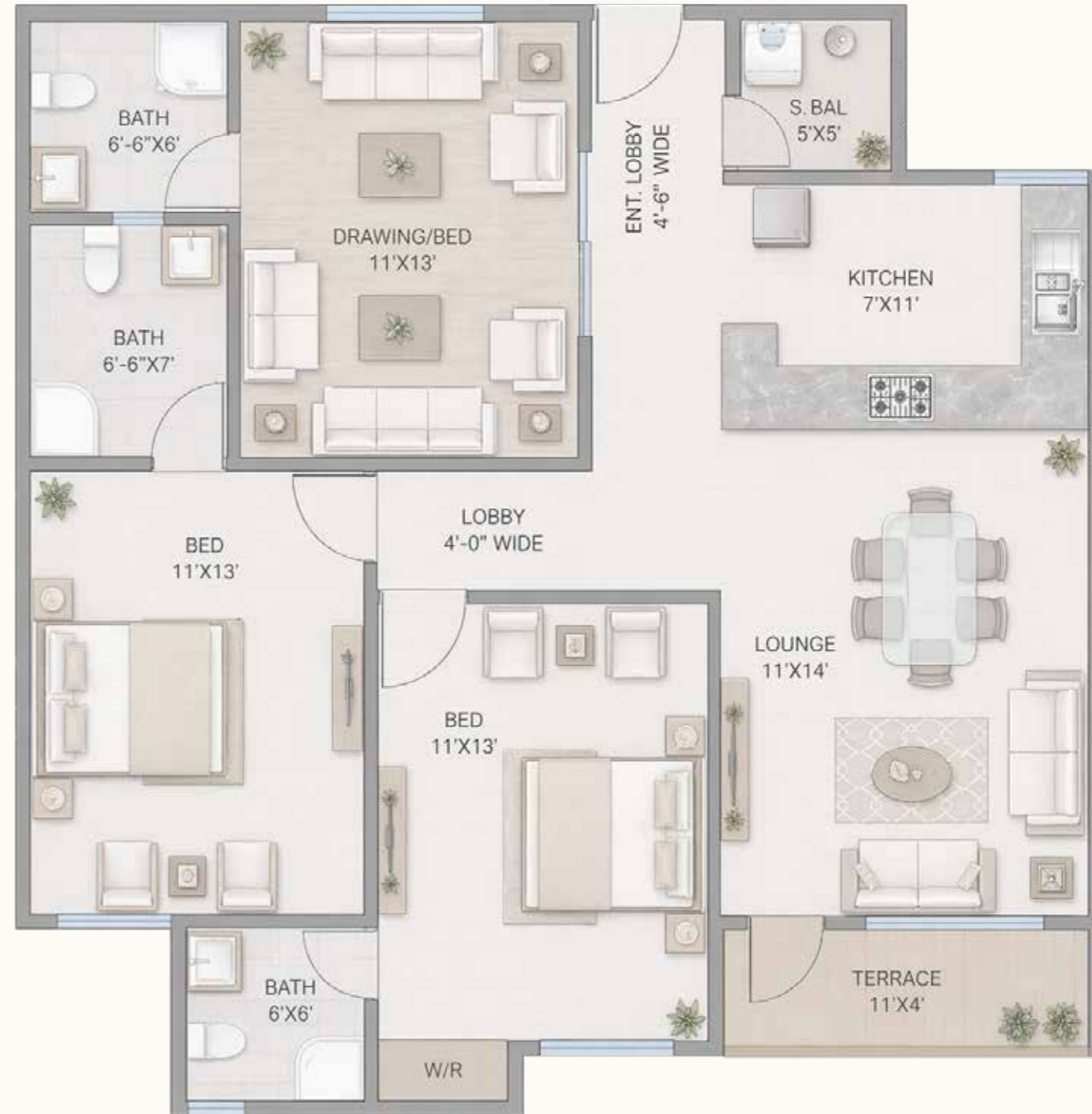


TOTAL AREA : 156.7 SQ.M 1687.18 SQ.FT



Type B

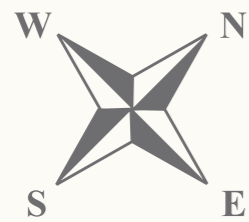
# 4 - Rooms



TOTAL AREA : 112.5 SQ.M 1211.47 SQ.FT

Type B1

# 4 - Rooms

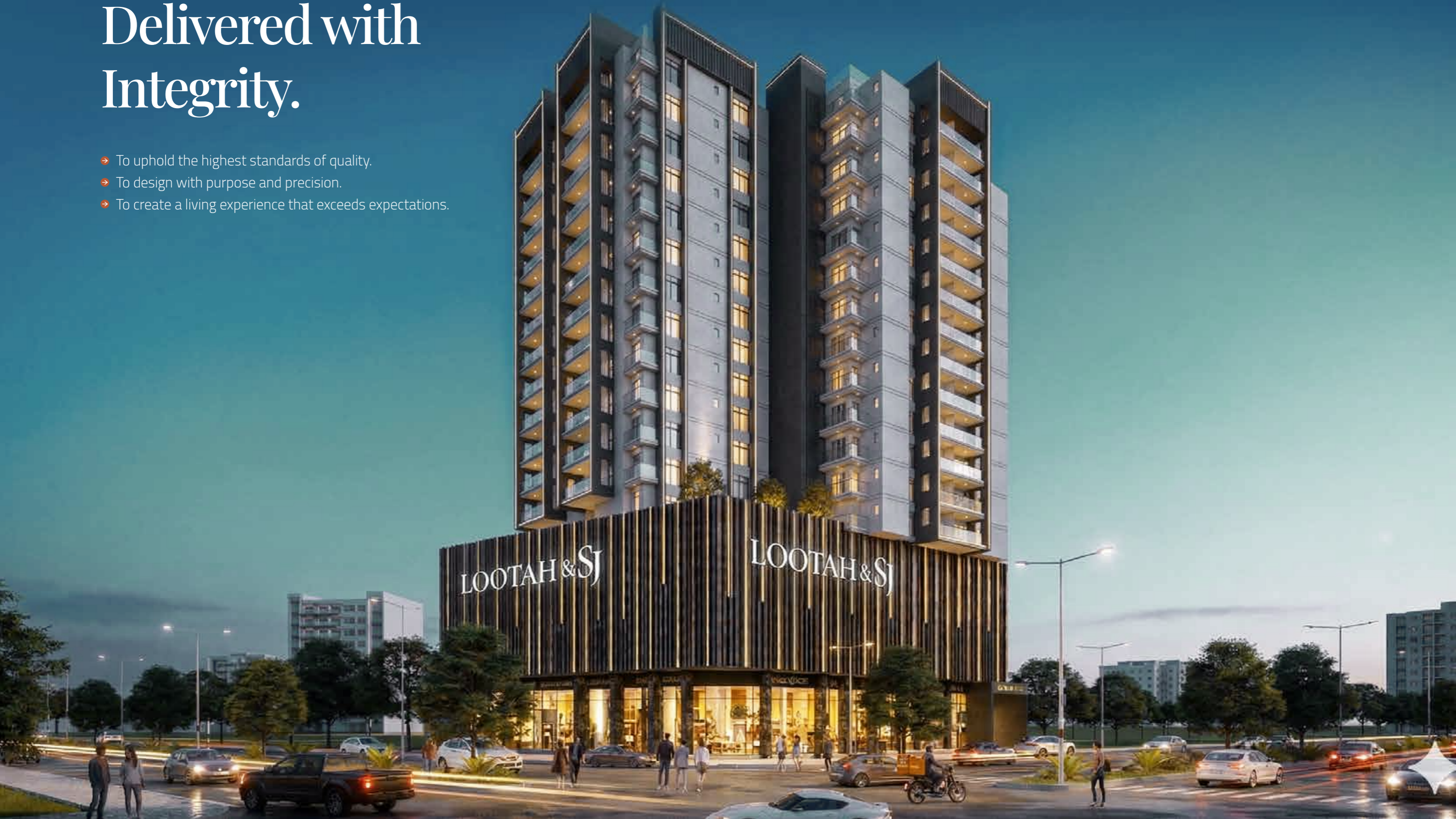


TOTAL AREA : 110.0 SQ.M 1184.35 SQ.FT



# Built on Trust. Delivered with Integrity.

- To uphold the highest standards of quality.
- To design with purpose and precision.
- To create a living experience that exceeds expectations.



Ownership

# Payment Plan

On Booking	On Allocation	On Confirmation
5%	5%	5%
On Start of Work	Monthly Installments	On Handover
5%	2% x 36	8%

**DISCLAIMER:** All visuals in the brochure are for illustrative purposes only. The final delivered project may differ in design, specifications, and finishes.

# LOOTAH & SJ

## TOWER

**UAE Sales Office:**

Mezzanine Floor, Duja Tower, Sheikh Zayed Road, Dubai, UAE.

**Karachi Sales Office:**

Ground Floor, Amna Tower, Saadi Town Road, Scheme 33, Karachi, Pakistan.

[LootahProperties.pk](http://LootahProperties.pk)